



# NK-1R Polyclonal Antibody

<b>Catalog No</b>	YP-Ab-12769
<b>Isotype</b>	IgG
<b>Reactivity</b>	Human;Mouse;Rat
<b>Applications</b>	WB;IF;ELISA
<b>Gene Name</b>	TACR1
<b>Protein Name</b>	Substance-P receptor
<b>Immunogen</b>	The antiserum was produced against synthesized peptide derived from human NK1R. AA range:211-260
<b>Specificity</b>	NK-1R Polyclonal Antibody detects endogenous levels of NK-1R protein.
<b>Formulation</b>	Liquid in PBS containing 50% glycerol, 0.5% BSA and 0.02% sodium azide.
<b>Source</b>	Polyclonal, Rabbit,IgG
<b>Purification</b>	The antibody was affinity-purified from rabbit antiserum by affinity-chromatography using epitope-specific immunogen.
<b>Dilution</b>	Western Blot: 1/500 - 1/2000. Immunofluorescence: 1/200 - 1/1000. ELISA: 1/5000. Not yet tested in other applications.
<b>Concentration</b>	1 mg/ml
<b>Purity</b>	≥90%
<b>Storage Stability</b>	-20°C/1 year
<b>Synonyms</b>	TACR1; NK1R; TAC1R; Substance-P receptor; SPR; NK-1 receptor; NK-1R; Tachykinin receptor 1
<b>Observed Band</b>	50kD
<b>Cell Pathway</b>	Cell membrane; Multi-pass membrane protein.
<b>Tissue Specificity</b>	Brain,G-protein coupled receptors,Lung,Placenta,
<b>Function</b>	function:This is a receptor for the tachykinin neuropeptide substance P. It is probably associated with G proteins that activate a phosphatidylinositol-calcium second messenger system. The rank order of affinity of this receptor to tachykinins is: substance P > substance K > neuromedin-K.,online information:Tachykinin entry,similarity:Belongs to the G-protein coupled receptor 1 family.,
<b>Background</b>	This gene belongs to a gene family of tachykinin receptors. These tachykinin receptors are characterized by interactions with G proteins and contain seven hydrophobic transmembrane regions. This gene encodes the receptor for the tachykinin substance P, also referred to as neurokinin 1. The encoded protein is also involved in the mediation of phosphatidylinositol metabolism of substance P. [provided by RefSeq, Sep 2008],



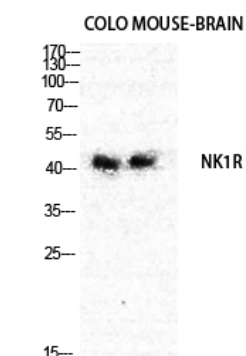
### matters needing attention

Avoid repeated freezing and thawing!

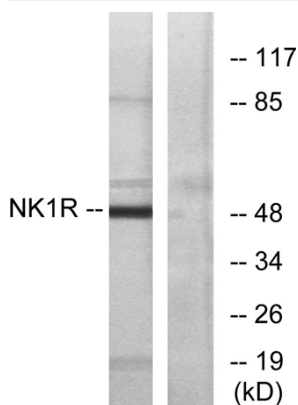
### Usage suggestions

This product can be used in immunological reaction related experiments. For more information, please consult technical personnel.

## Products Images



Western Blot analysis of MOUSE-BRAIN COLO cells using NK-1R Polyclonal Antibody diluted at 1:1000



Western blot analysis of lysates from Jurkat cells, using NK1R Antibody. The lane on the right is blocked with the synthesized peptide.